



The Villas. Design D (1.4)
4 Bedrooms.

The Villas. Design D (1.4)

4 Bedrooms.

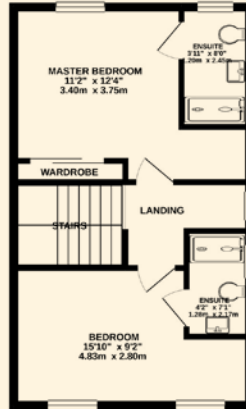
However you set up your home, you'll love the luxury of your own private terrace and the convenience of the integral garage offered by this four bedroomed, three-storey spacious home.

On the ground floor, the entrance hallway leads you to a family room and guest cloakroom and into an open plan spacious kitchen/diner with bifold doors accessing your private garden area. The utility room to this property is ideally situated next to the kitchen, through which access to the garage can be gained.

The first floor offers a versatile living space with access to an outside terraced area along with two bedrooms, a family bathroom and an airing cupboard.

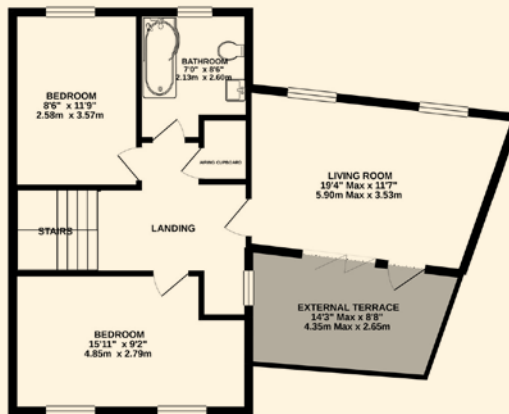
On the second floor, you will find the spacious master bedroom with en-suite and fitted wardrobes, along with a further en suite bedroom.

We take every care in preparing our sales details and endeavour to make sure that details are correct at the point of going to print, however they are pre construction and may be subject to changes and prospective purchasers should satisfy themselves as to the correctness before purchase and take legal advice. Photographs and illustrations are a guide and do not represent items included in the sale. Room sizes are approximate; do not use them to buy carpets or furniture. Floor plans are for guidance only. You must take advice from your legal representative who should make local enquiries and searches. These details do not form any part of a contract.



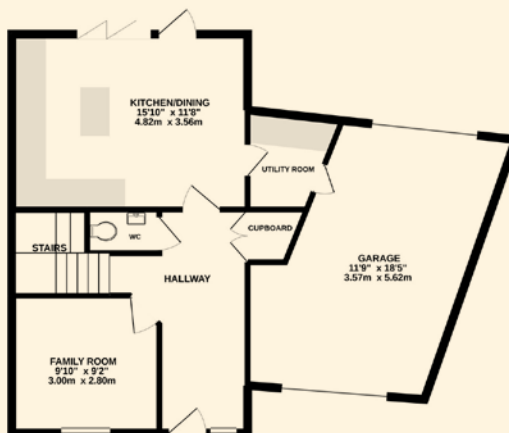
Second Floor Plan

Master Bedroom	3.40m x 3.75m	11'2" x 12'4"
Bedroom	4.83m x 2.80m	15'10" x 9'2"



First Floor Plan

Bedroom	4.85m x 2.79m	15'11" x 9'2"
Bedroom	2.58m x 3.57m	8'6" x 11'9"
Bathroom	2.13m x 2.60m	7'0" x 8'6"
Living Room	5.90m x 3.53m	19'4" x 11'7"
External Terrace	4.35m x 2.65m	14'3" x 8'8"



Ground Floor Plan

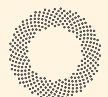
Kitchen/Dining	4.82m x 3.56m	15'10" x 11'8"
Family Room	3.00m x 2.80m	9'10" x 9'2"
Garage	3.57m x 5.62m	11'9" x 18'5"

Gross Internal Area

Level	Area	
Ground Floor	64.4 m ²	693 ft ²
First Floor	55.3 m ²	595 ft ²
Second Floor	39.2 m ²	422 ft ²
	158.9 m ²	1710 ft ²

**CONSUMER
CODE FOR
HOME BUILDERS**

www.consumercode.co.uk



FLOREAT